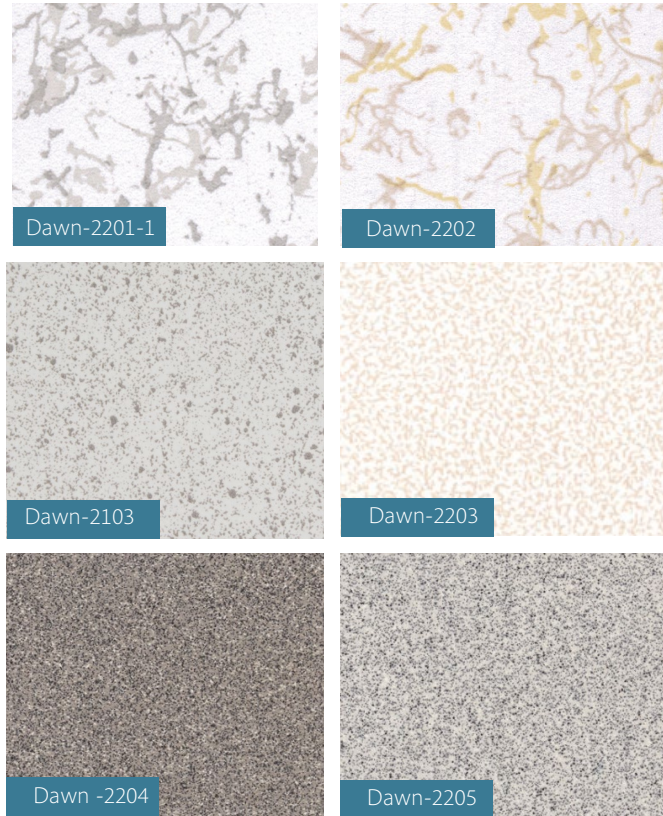
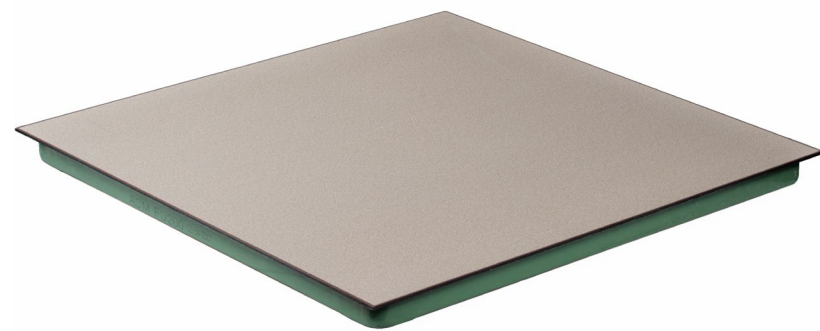
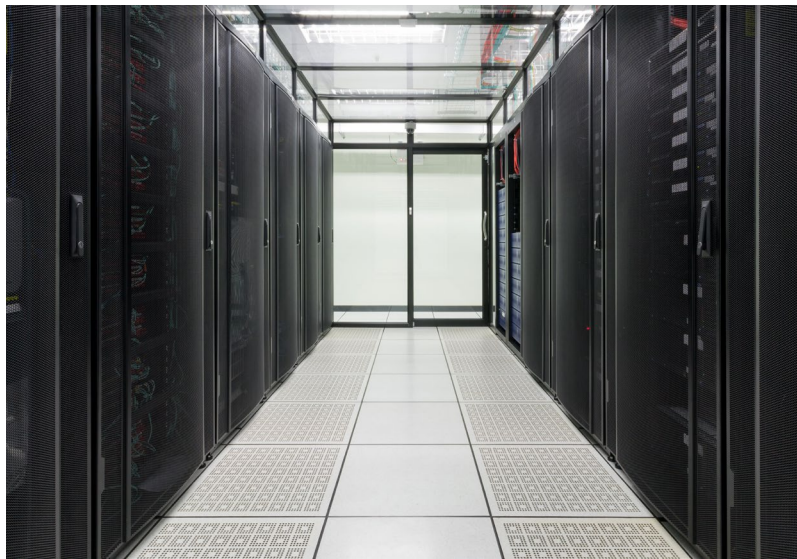


## High Pressure Laminate & Solid Finishes

High pressure plastic laminate is used in 90% of all computer room applications, and is the largest product used on factory laminated floor finishes.

Laminate is a one piece tile (600x600mm, 24" x 24"), and unlike vinyl, will provide a uniform finish with no joints. HPL has the advantage of not requiring wax or maintenance that could produce static problems in the data center.

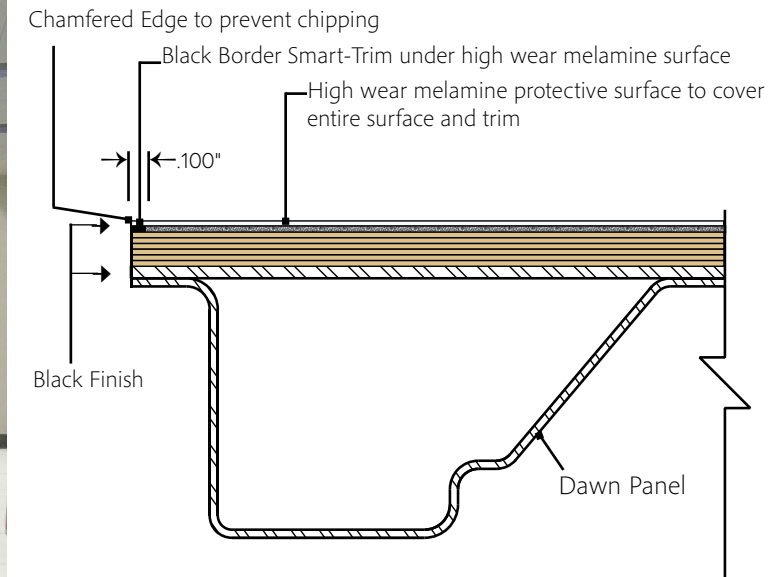


- 20 % Better wear surface results than competition
- Revolutionary trim that is printed into the laminate under the high wear finish
- No routing or removal of high wear surface
- No exposed paper core to absorb dirt and moisture
- No recess or step down. Reduces chipping and caster noise. Eliminates dirt trap
- No surface applied paint or inks - cannot wear off.

## Smart - Trim (Patent Pending)



## Innovations in Access Flooring



### Dawn Laminate Specification

Properties	NEMA Test Method	NEMA Standard	Dawn Laminate Results
Electrical Resistance	NFPA 99	-	1.0x10 <sup>6</sup> - 2.0x10 <sup>10</sup>
Stain Resistance	3.4	No Effect	No Effect
Boiling Water Resistance	3.5	No Effect	No Effect
High Temperature Resistance	3.6	Slight Effect	No Effect
Wear Resistance	3.13	3000 cycles/min.	3000+
Scuff Resistance	3.16	No Effect	No Effect

OUR EXPERIENCE & SOLUTION

SMOOTH  
SEAMLESS  
WEARPROOF



# ConTile & StatTile

combines function with lasting beauty when high performance ESD flooring is a must

PVC uses a process to ensure the conductive elements are distributed evenly through the entire tile thickness. This, along with the finest materials, ensures a lifetime of consistent conductivity regardless of wear.

PVC carries a lifetime conductivity warranty.

PVC has a superior polished finish that does not require special treatments or waxes to maintain conductivity or appearance.

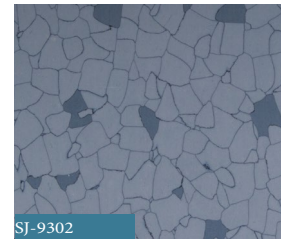
PVC has 12 colors to meet the needs of the most discerning designers.

PVC is resistant to very strong chemicals.

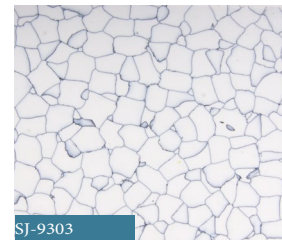
- . acids
- . strong alkalis
- . alcohols
- . aromatic solvents
- . aliphatic solvents



SJ-9301



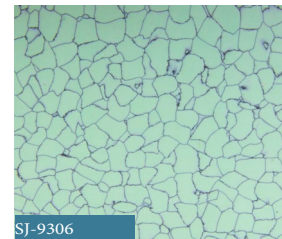
SJ-9302



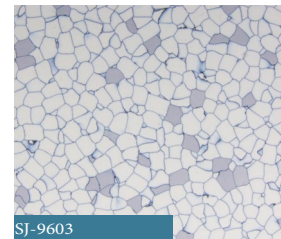
SJ-9303



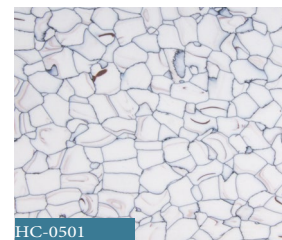
SJ-9305



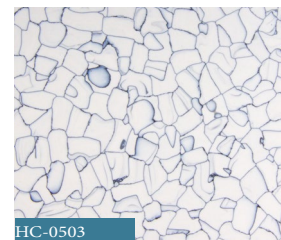
SJ-9306



SJ-9603



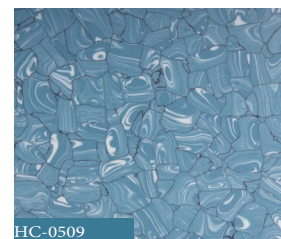
HC-0501



HC-0503



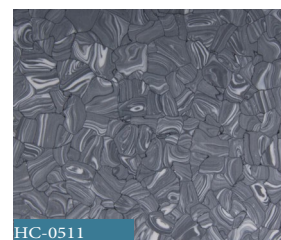
HC-0506



HC-0509



HC-0510



HC-0511

The use of PVC conductive or static dissipative floor covering checks the influence of electrostatic charges in the sensitive work places. The effects of electrostatic influence are very serious, and many of the incidents include damage to integrated circuits in semiconductor production and loss of valuable data from malfunction of computer equipment caused directly by a buildup of static electricity.

There are also some cases of inadvertent ignition of inflammable and explosive substances caused by static discharge.

When two objects with electrostatic charge come into contact or friction, electron movement occurs with electrification to positive and negative poles which are stationary at the points of mutual contact, a direct action against these points will cause instantaneous electric discharge, the result being damage to products, pollution or malfunction. Because of this, both UL and NFPA strongly recommend the use of conductive floor coverings.

Where PVC is recommended:

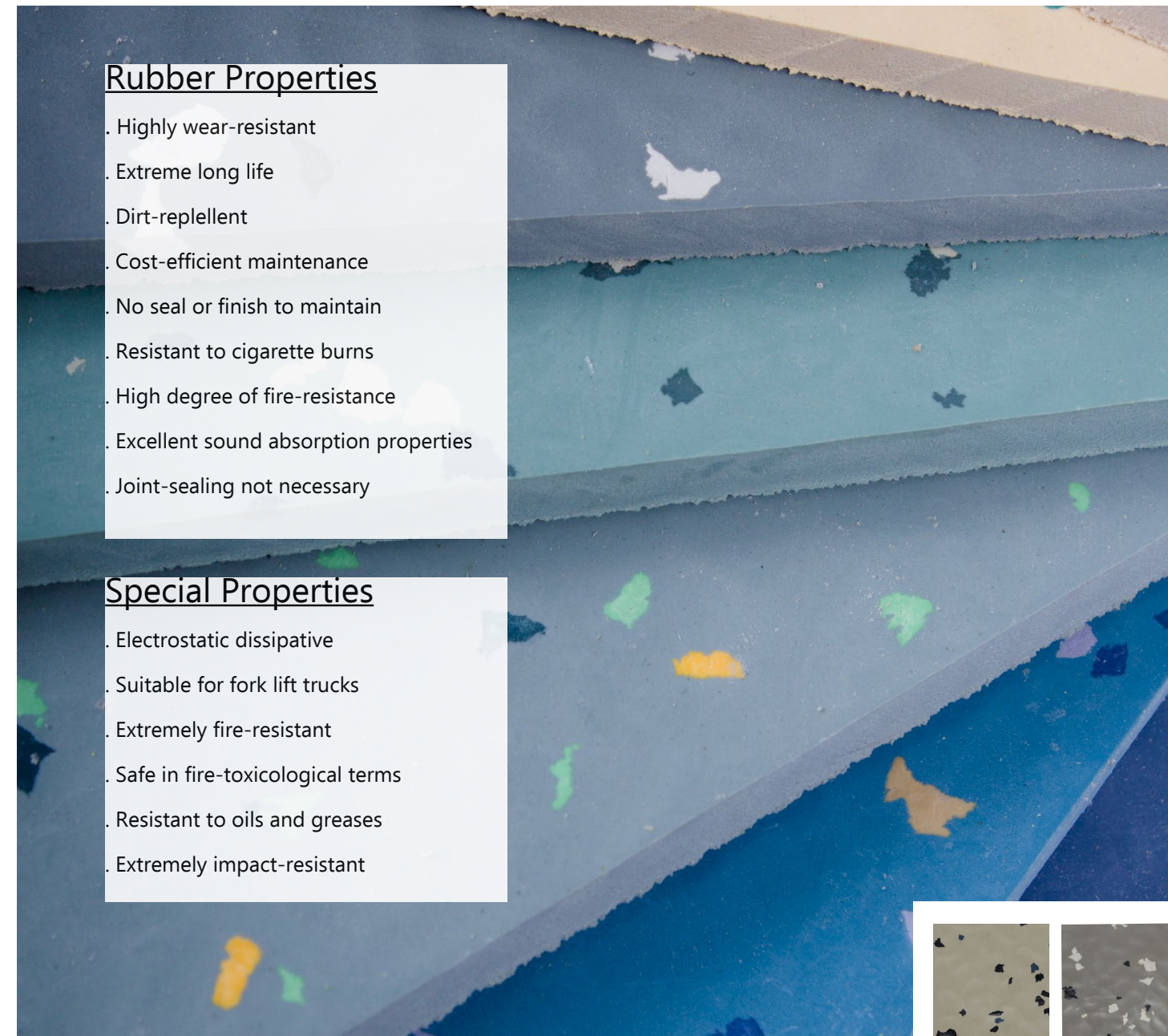
- . electronic manufacturing facilities
- . computer/server room installations
- . clean rooms
- . assembly factories
- . telecommunication rooms
- . health care laboratories



Performance	Conductive	Static Dissipative
Resistance: point to ground	$2.5 \times 10^4$ to $10^6 \Omega$	$10^6$ to $10^8 \Omega$
Resistance: point to point	$2.5 \times 10^4$ to $10^6$ to $10^6 \Omega$	
Static decay	5000 to 0 volts in < 0.01 sec.	5000 to 0 volts in < 0.2 sec.



# Anti-Static Rubber Tile

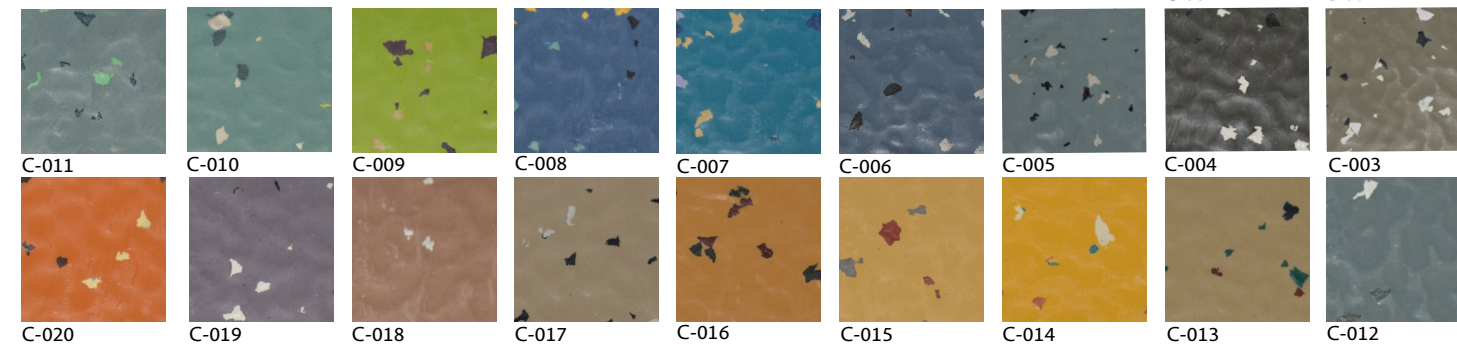


## Rubber Properties

- Highly wear-resistant
- Extreme long life
- Dirt-repellent
- Cost-efficient maintenance
- No seal or finish to maintain
- Resistant to cigarette burns
- High degree of fire-resistance
- Excellent sound absorption properties
- Joint-sealing not necessary

## Special Properties

- Electrostatic dissipative
- Suitable for fork lift trucks
- Extremely fire-resistant
- Safe in fire-toxicological terms
- Resistant to oils and greases
- Extremely impact-resistant



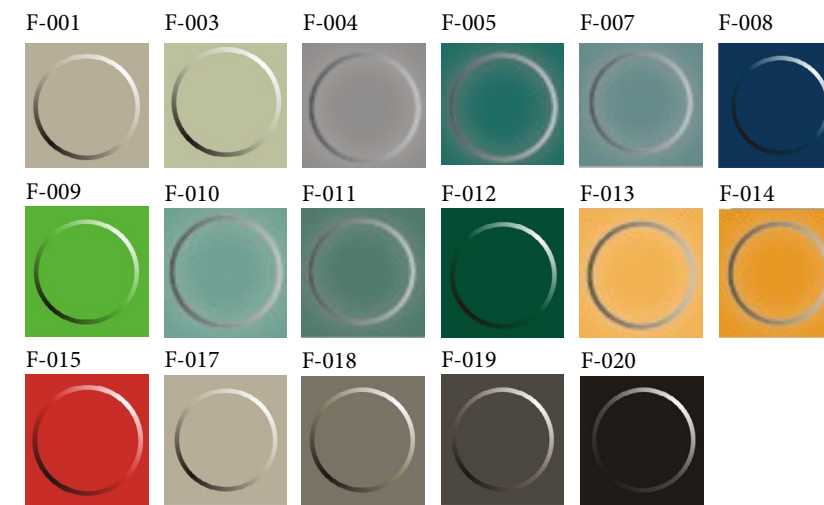
Available in a hammered finish or smooth finish

# Standard Rubber Tile

Safe, beautiful and hard wearing for a variety of applications.

## Electrostatic Protection

- Static generation less than 20 volts per AATCC-134
- Easy to maintain - no conductive wax necessary
- Chemical and hot solder resistant
- Resistant to most oils and grease
- Ultra low vibration
- Outgassing according to ASTM-E-595-84 VCM less than 1.2%



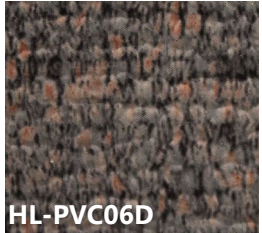
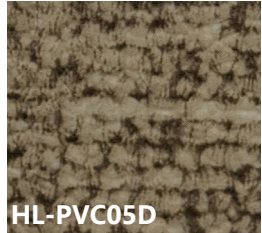
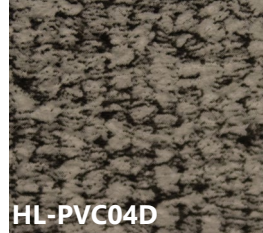
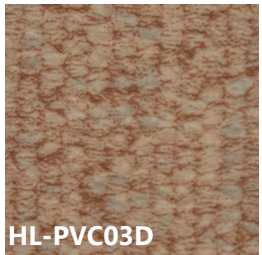
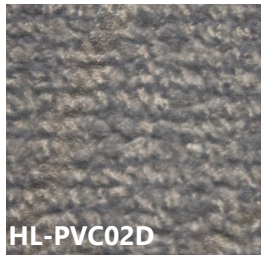
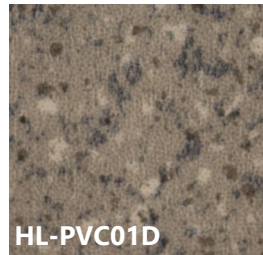
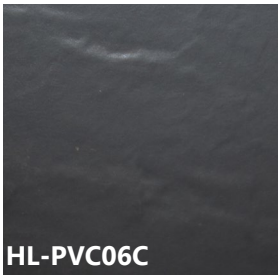
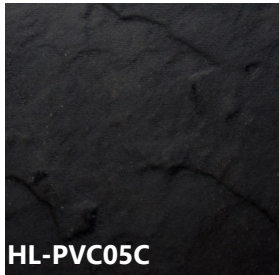
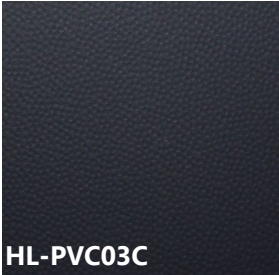
- Data Centers
- Health care facilities
- Industrial buildings
- High traffic public venues
- Leisure facilities
- Airports and terminals
- Schools and institutions
- Office buildings

Test	Average Results
Length & Width Size Deviation	± 0.1%
Diagonal Corners Squareness Deviation	≥ 0.008" (0.20 mm)
Hardness Shore "A" Durometer	> 85
Tensile-Strength	> 1450 psi (10 Mpa)
Bending Resistance (3/4" metal rod)	No Effect
Peeling Strength	≥ 5620 lbf/in (25 kN/mm)
Wear Resistance (mm/5N) Roller Type	≤ 150
Thermal Stability (dimensional change)	≤ ± 0.4%
Fire Resistance	Yes
Resistance to Cigarette Burns	Third Degree
Resistance to Chemicals (carbon black ink)	No Visible Change
Electrical Properties Volume Resistance	≥ 10 <sup>10</sup> Ω
Light Resistance	Third Degree
Brittleness Temperature	≤ 5° F (-15° C)
Indentation Residual Level	≤ 0.010" (0.25 mm)



# LUXURY VINYL

Low-maintenance floor that takes on traffic and spills. Vinyl flooring lets you transform any area with gorgeously realistic and durable designs.



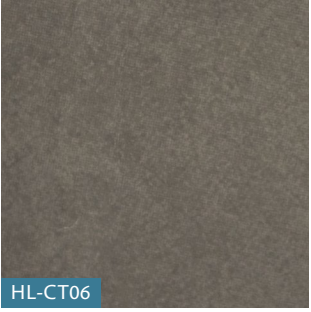
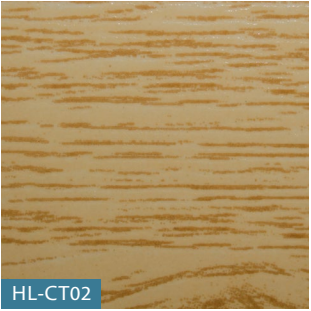
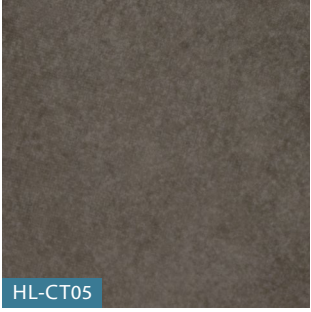
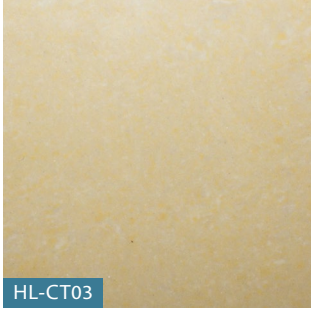
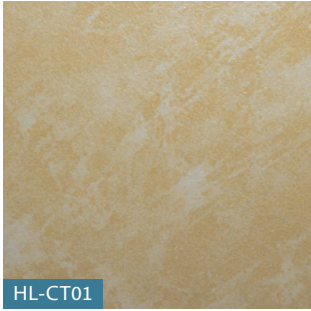
- Office Buildings
- Lobby & Reception Areas
- Board Rooms
- Corridors
- Administrative Offices
- Sales Offices
- Airports

# PORCELAIN FINISH

Your design ideas in one place



Versatile and elegant, porcelain floor tiles are innovative products that is gaining popularity among builders.



- Office Buildings
- Lobby & Reception Areas
- Board Rooms
- Corridors
- Administrative Offices
- Sales Offices
- Airports

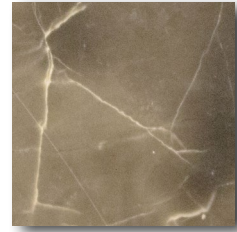




## NATURAL MARBLE FINISH



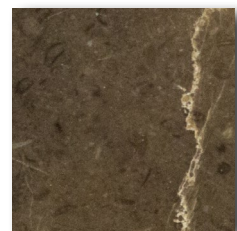
HL-MT01



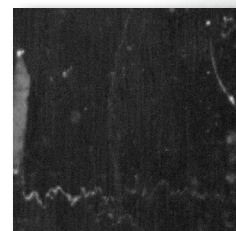
HL-MT02



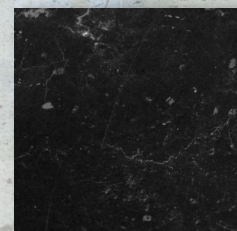
HL-MT03



HL-MT04



HL-MT05



HL-MT06



Marble tile is a natural floor surface well known for its beauty, style, and elegance. Instantly elevate the appearance of your space.

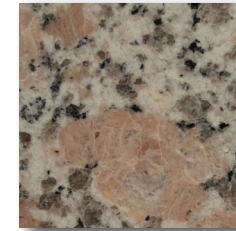
## NATURAL GRANITE FINISH



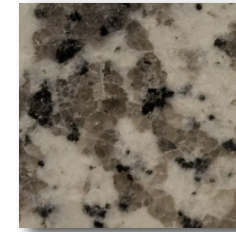
HL-ST01



HL-ST02



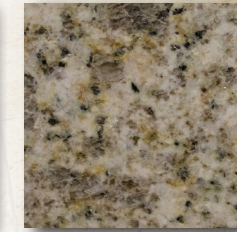
HL-ST03



HL-ST04



HL-ST05



HL-ST06



### APPLICATIONS

- Office Buildings
- Lobby & Reception Areas
- Board Rooms
- Corridors
- Administrative Offices
- Sales Offices
- Airports



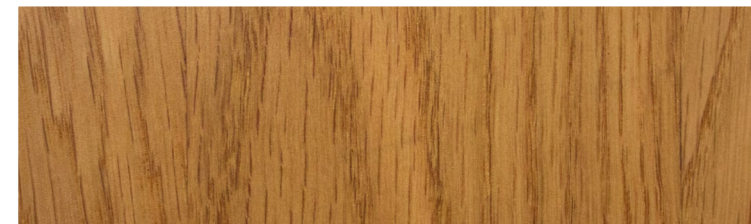
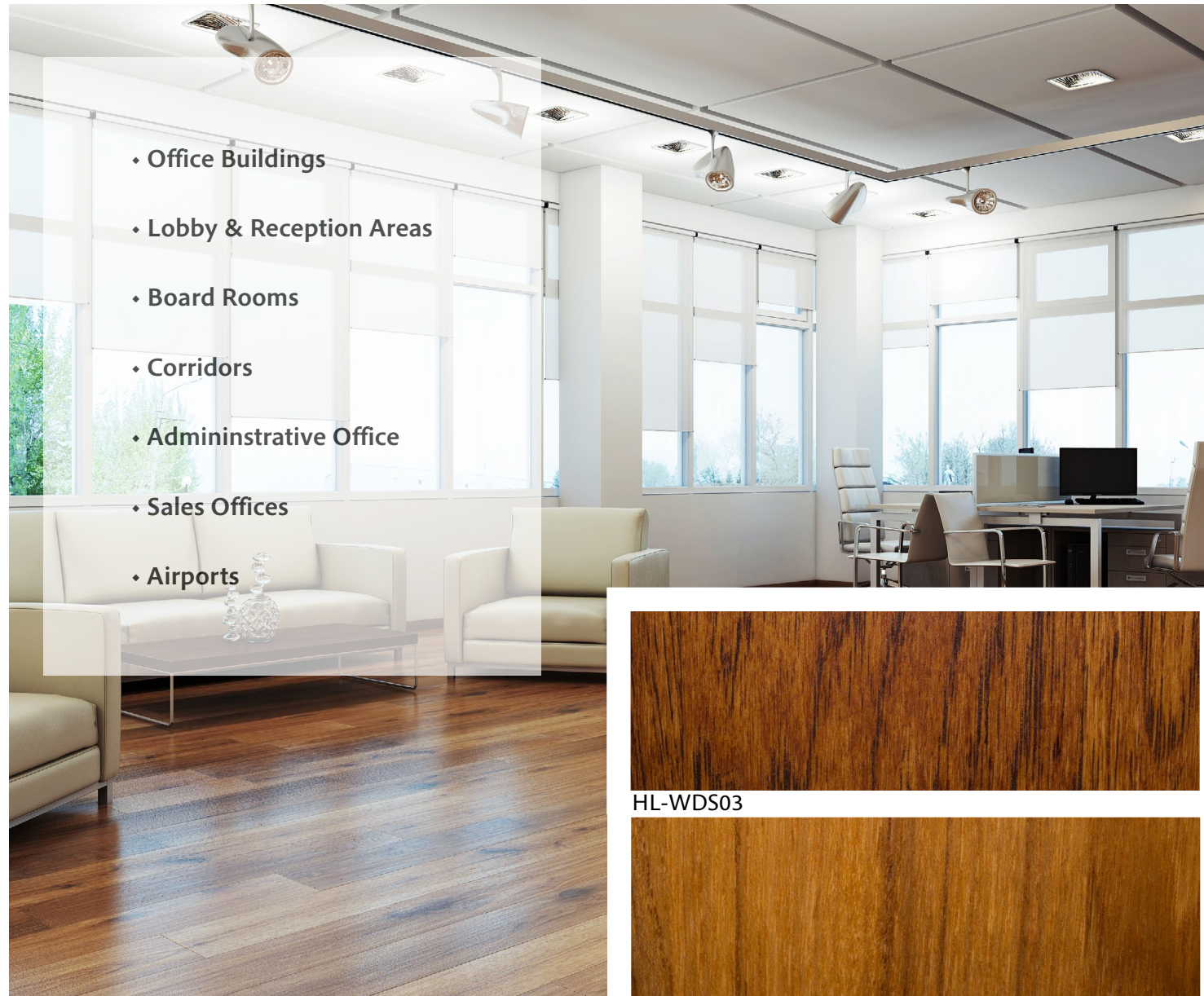
### APPLICATIONS

- Office Buildings
- Lobby & Reception Areas
- Board Rooms
- Corridors
- Administrative Offices
- Sales Offices
- Airports

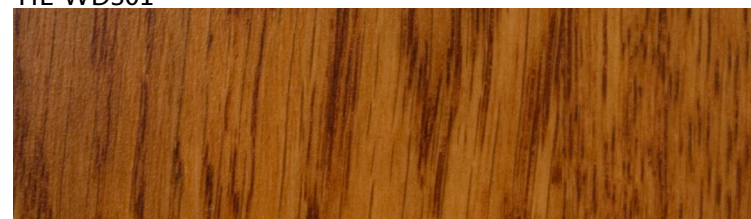




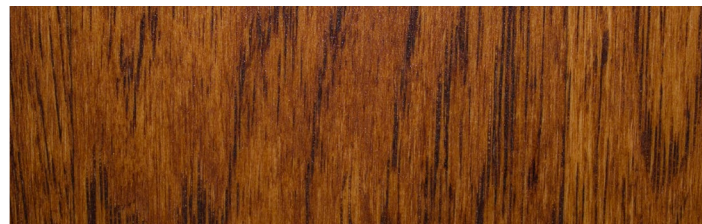
# Hardwood



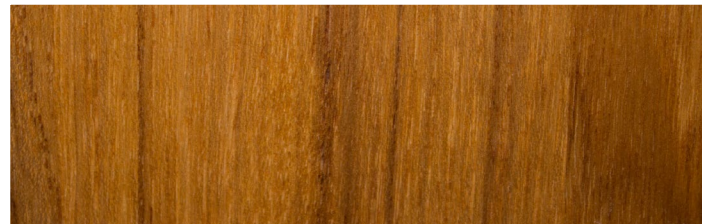
HL-WDS01



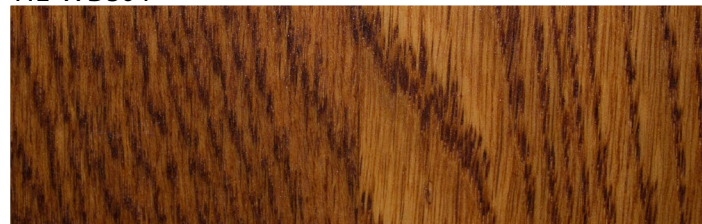
HL-WDS02



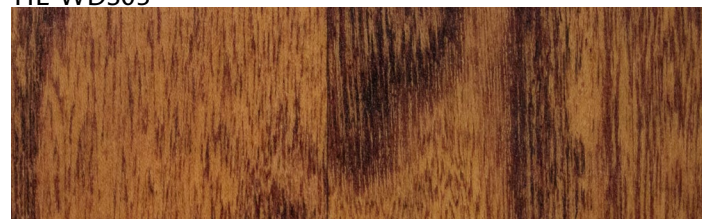
HL-WDS03



HL-WDS04



HL-WDS05



HL-WDS06

# Wood Grain High Pressure Laminate

Add warmth to your interior with wood grain high pressure laminates.

Dawn's wood grain high pressure laminate is the surface solution for high-use applications in offices, lobbies/reception areas, educational institutions, sales offices, board rooms, and more.



Maple



Light Sapele

3021



Sapele

3022



Light Beech

3023



Cherry

3038



Beech

3040



Light Cherry

3045

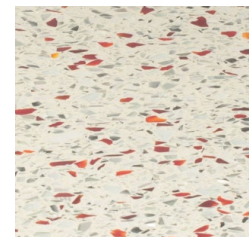


# Terrazzo

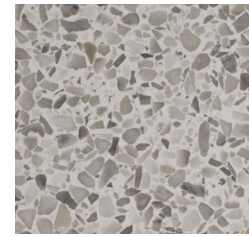


# Carpet Plank

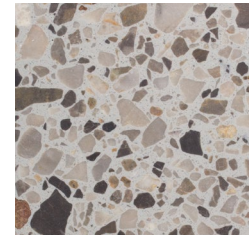
- Office Buildings
- Lobby & Reception Areas
- Board Rooms
- Corridors
- Administrative Office
- Sales Offices
- Airports



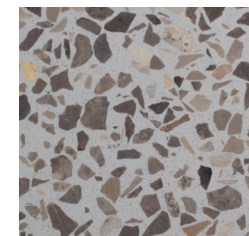
T-102



T-103



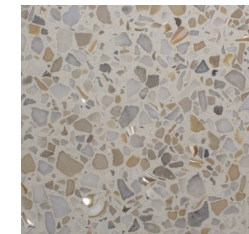
T-181



T-182



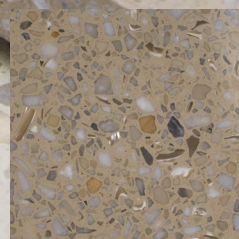
T-183



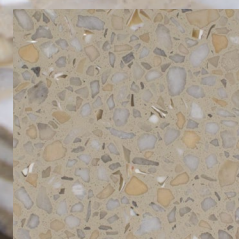
T-191



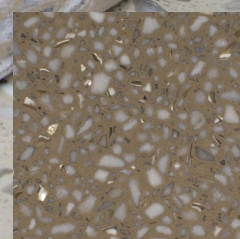
T-803



T-194



T-193



T-192



Q1083/01



Q1083/02



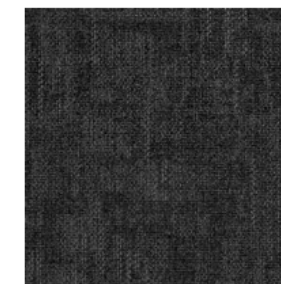
Q1083/03



Q1083/04



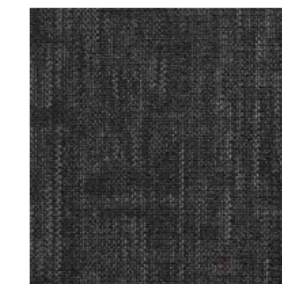
Q1090/01



Q1090/02



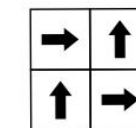
Q1090/03



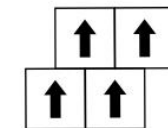
Q1090/04



Recommended Installation Methods



Quarter turn



Monolithic

## Dawn Carpet Plank Specification Sheet

Specification	Details	Specification	Details
Structure Type	Tufted loop pile structure	Backing	Eco-friendly PE backing
Surface Fiber	100% Nylon (including antistatic fiber)	Flame Retardance	B1
Dyeing Method	Solution dyeing	Rubbing Color Fastness	Level 4-5
Machine Gauge	1/12	Sunlight Color Fastness	Level 5-6
Pile Height	4±0.5mm	Antibacterial Properties	Antibacterial, Anti-mite, Inhibits Bacteria, Mold, Fungi
Size	50cm×50cm / 60cm×60cm	Environmental Compliance	U.S. CRI+ Advanced Environmental Certification
Primary Backing	Polyester spunbond non-woven fabric	Antistatic Performance Index	Permanent Antistatic
Surface	Stain-Resistant Treatment		

With its classic look, durability, and low maintenance, Terrazzo is a great selection for your next project.